

**Validating Skills with Confidence**  
ABET and Quality Assurance



December 19, 2025



ABET

1

1

## Your Presenters



**Jessica Silwick**  
COO/CFO



**Melanie Diaz**  
Sr. Manager, Professional  
Programs

ABET

2

2

# Agenda

- Who is ABET?
- How does ABET provide quality assurance?
  - Accreditation
  - Professional Programs
  - Recognition of Credentials
- Why are we offering Credential Recognition?
- What is Recognition of Credentials (ROC) Service?
- Live Q&A

**ABET**

3

3

## ABET Assuring Confidence

We are a nonprofit, ISO 9001 certified quality assurance organization. Through the accreditation of academic programs, recognition of credentials and assessment of student learning, we support excellence in education worldwide. Our services and global partnerships help equip professionals to confidently face the future.

**ABET**



4

## How ABET Provides Quality Assurance?

- **Accreditation**
- **Assessment**
- **Recognition**

## About ABET

We are a nonprofit, quality assurance organization with a focus on educational excellence.

We provide the following quality assurance services:

- Recognition of credentials
- Accreditation of academic programs
- Assessment of student learning



# How ABET Provides Quality Assurance?

- **Accreditation**

## **ABET Accreditation of Academic Programs**

- With ABET accreditation, students, employers and the society we serve can be confident that a program meets the quality standards that produce graduates prepared to enter a global workforce.



## What Does ABET Accredit?

- Academic programs leading to a specific degree in a specific discipline
- Misconceptions clarified:
  - Not institutions
  - Not schools, colleges or departments
  - Not facilities, courses or faculty
  - Not graduates
  - Not degrees

## Value of ABET Accreditation

- ABET-accredited programs recognized globally
  - Commitment to quality education
- Outcomes-based approach
  - “What is learned” vs. “what is taught”
- Emphasis on continuous quality improvement
- Criteria encourages innovation

# ABET Professional Programs



ABET

11

11

ABET delivers transformative, high-quality learning experiences that build expertise, foster innovation and instill confidence in educators and learners, primarily Assessment of Student Learning.



ABET

12

12

## ABET SYMPOSIUM

# THE ABET SYMPOSIUM

- Spring of each year
  - 40+ sessions
  - Networking Opportunities
- Three educational tracks, including:
- Accreditation
  - Assessment
  - Theme Based

ABET

13

13



14

# Assessment Resources and Tools



## Assessment Planning Articles



Assessment Planning Tools

### Using Commercial Exams for Program Assessment

Things to consider if you are thinking of using a commercial exam for student outcomes. Many programs have successfully employed nationally normed examinations such as the Fundamentals of Engineering exam developed and administered by the National Council of Examiners for Engineering and Surveying as an integral element of their program assessment process.



### Using Course or Test Grades for Program Assessment

Use of course or test grades as evidence of learning outcomes.



### Understanding the Accreditation Question

Design of the assessment process rests on the understanding of the accreditation question.



Assessment Planning Articles

### Things I Wish I Had Known

Basic principles when developing a program assessment process.

### Surveys and Questionnaires

Things to consider when designing and implementing a survey or questionnaire.

### Sampling

Things to consider when deciding whether sampling should be used for program assessment.

# On-Demand Credentialing Courses



## Workshops

**IDEAL**

Institute for the Development of Excellence  
in Assessment Leadership (IDEAL)

### Program Assessment Workshops

Interactive in-person or virtual workshops

Private on-campus workshops

Coming soon ... self-paced courses!



## How ABET Provides Quality Assurance?

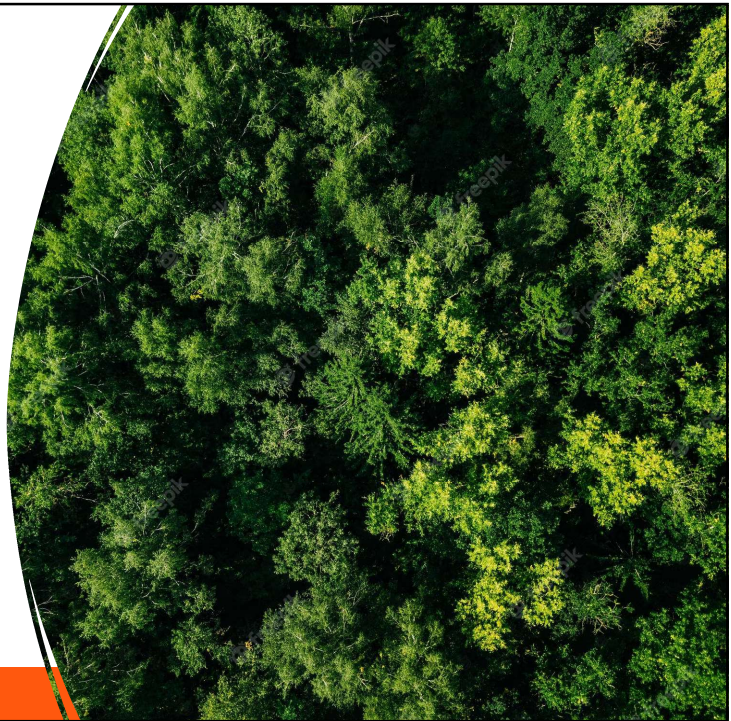
- **Recognition**

## Our Impact

ABET is uniquely positioned to drive the knowledge, skills and experiences of quality assurance into credentials.



ABET



19

## Why Do Credentials NEED Quality Assurance?

- Overpopulated Credential Ecosystem
- Mobility
- Acceptability



ABET

20

20

---

## Research/Pilot Findings

21

---

## Lessons Learned and Testimonials from Recognized Providers



# SIEMENS



22

22

---

## Recognition of Credentials Service

23

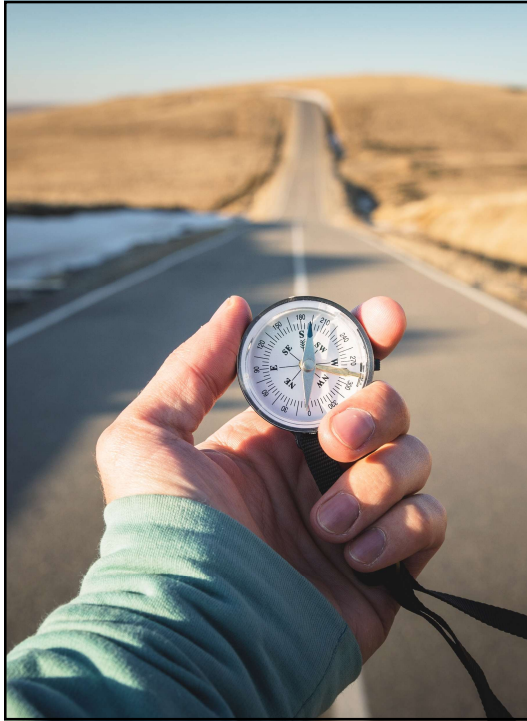
### What is ABET's Recognition of Credentials?

- Quality Assurance Service for Specific Non-degree Skills
- Flexible Format
- Nimble + Rigorous
- Expanding Access

ABET

24

24



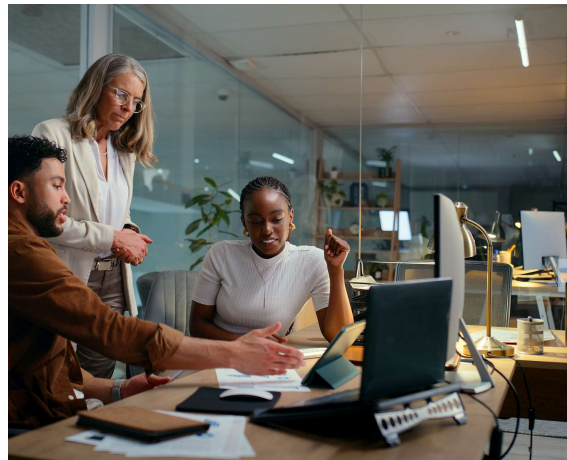
## Recognition Process Cycles and Timing

25

25

## ROC Process

- Application submission
- Self-Assessment submission
- Credential review by Expert Review Team
- Dialog between Teams
- Recognition Determination



ABET

26

26

# Credential Recognition Standards

## Focused on:

- Does the Credential deliver what is promised to the Learner?
- Are education goals and learning outcomes met as advertised?
- Do the content developers and deliverers possess the experience and education needed?
- Are continuous improvement processes embedded in the design/development/delivery of the credential program?

## Recognition of Credentials Pricing

- Application Fee - \$500
- Review Fee - \$2100 average price per credential
- Other fees may apply depending on the structure and complexity of the credential(s)

# ABET Recognition of Credential Logos



29

The screenshot shows a website header with navigation links: 'Software &amp; products', 'Solutions &amp; services', 'Industries', and 'Training &amp; support'. On the right, there are icons for search, language ('EN'), shopping cart, and user profile ('Log in'). Below the header is a secondary navigation bar with 'Academic program', 'Students', 'Educators', 'Industry leaders', 'Credentials', 'Academic partner grant', and a yellow 'Contact us' button. The main content area features a dark blue banner with the text 'The world's first ABET-recognized credential provider' and 'Siemens is now the world's first company to provide ABET-recognized industry credentials.' A teal 'Learn more' button is on the right. Below the banner are two video thumbnails: one with the ABET logo and 'Recognized Credential' text, and another titled 'Expedite - Skills for Industry' with a play button icon and a video player interface showing a progress bar at 01:44.

30

# INTELLIGENCE MICRO CREDENTIALS

Purdue University's Artificial Intelligence Microcredentials offer quick and convenient online courses that cover the fundamentals of artificial intelligence and its applications. Every course functions as its own mini-credential. Students earn a certificate of completion and digital badge from Credly for every course they complete. Students can pick and choose what course to take and stack credentials in topics that interest them.

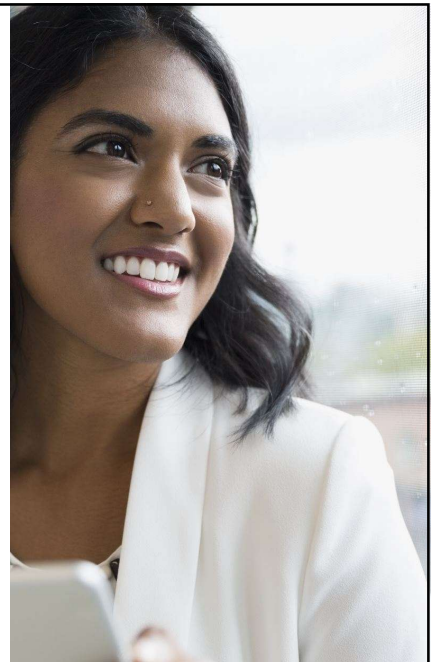
Several of these courses have been recognized by **ABET** under its Certificate Recognition Standards. The certified courses include: Machine Learning for Linear Predictive Models, Data Analytics for Decision Makers, Manufacturing Analytics, Natural Language Processing Solutions,



31

## What's on the Horizon

- First round of reviews outside of our pilot started this October
- We are now accepting applications for the next three review cycles between now and October 2026
- Quarterly Recognition decisions



32

## Want to Stay in Touch?



ABET

33

33

### Contact Us about Recognition of Credentials

- Website – [www.abet.org/recognition](http://www.abet.org/recognition)
- Questions? – Contact [recognition@abet.org](mailto:recognition@abet.org)

ABET

34

34

**Questions?**

**ABET**

35

35

**Thank You!**

**ABET**

36

36